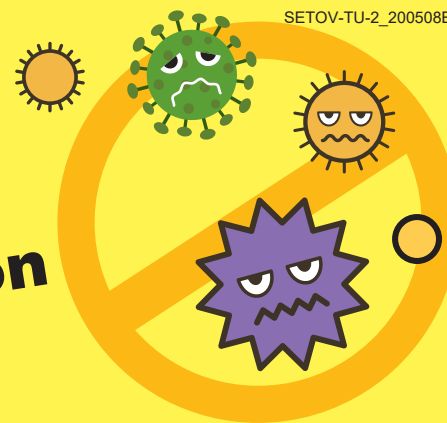


For immediate **Disinfection!** Easy and quick installation



Install at a facility entrance to
**block out the virus and
prevent the spread of infections**

Portable Spray Unit

SETOV0406 (or 0508) S303
+TS303+UT (with 20L Tank)



No dinosaur display or cover included.



Made by Industrial-use
spray nozzle
manufacturer

Disinfection
at entrance



Installation example

Indoor
disinfection



Humidification in
manufacturing
facility



"The Fog Engineers"
H. IKEUCHI & CO., LTD.

Fine fog spray with chemical solutions for preventing viral infection



Order code:

Spray Unit SETOV0406 S303+TS303+UT (with 20L Tank)
(SETOV0508 nozzle is also available.)

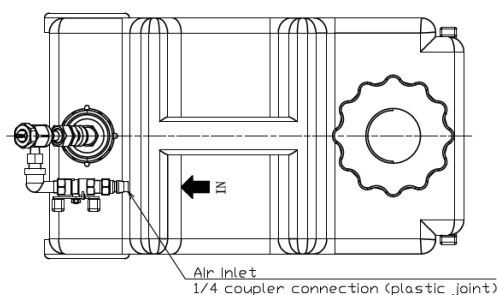
- Immediate use with an air compressor
- Clog-resistant nozzle for easy maintenance*1
- Available in two spray capacity type:
SETOV0406: Approx. 1.6 L/hr at 0.3 MPa, 12-hour continuous spraying
SETOV0508: Approx. 2.5 L/hr at 0.3 MPa, 8-hour continuous spraying
Note: the above are average values as spray capacity varies depending on liquid amount in the tank.
- Includes a large-capacity tank of 20 liters
- Spray can be controlled with an optional mat switch and a timer

*1) Spraying chemicals will wear and corrode the nozzle eventually. When the nozzle is clogged, remove the nozzle tip, clean it before re-spraying. If a clog cannot be cleared by cleaning, replace the nozzle to a new one.

Note: After spraying chemicals, spray water for about 5 minutes to mitigate corrosion and rust of the metal parts. (See the instruction manual for details.)

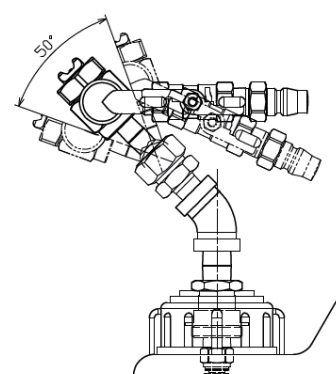
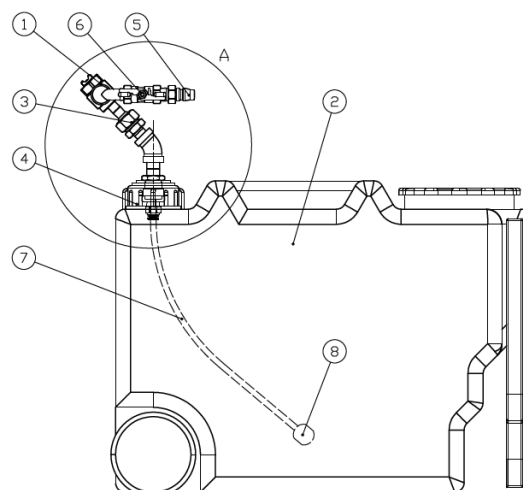
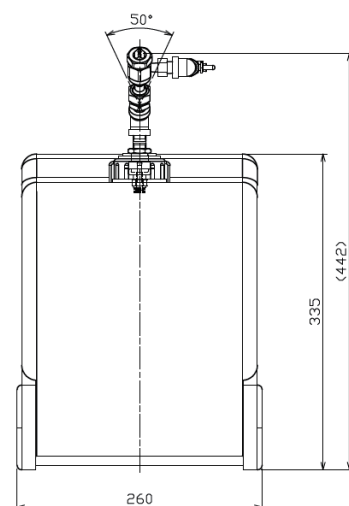
Drawing

Unit: mm



Components

- 1) SETOJet Nozzle (Stainless steel)
- 2) Plastic tank (PE)
- 3) UT Ball joint
- 4) Cap (PE)
- 5) Fitting (PA)
- 6) 1/4 Valve (Stainless steel)
- 7) 700 mm Water hose (PVC)
- 8) Air stone



Details of A
(Scale: 1/2)

Note: This unit does not include a compressor or spray liquid.